



POWER EQUIPMENT CORPORATION

AFM-27
PART # DPEC001027
DATE: 06-26-12
REVISED: 02-24-16

31-484

HEAVY DUTY FLOOR SPINDLE SANDER

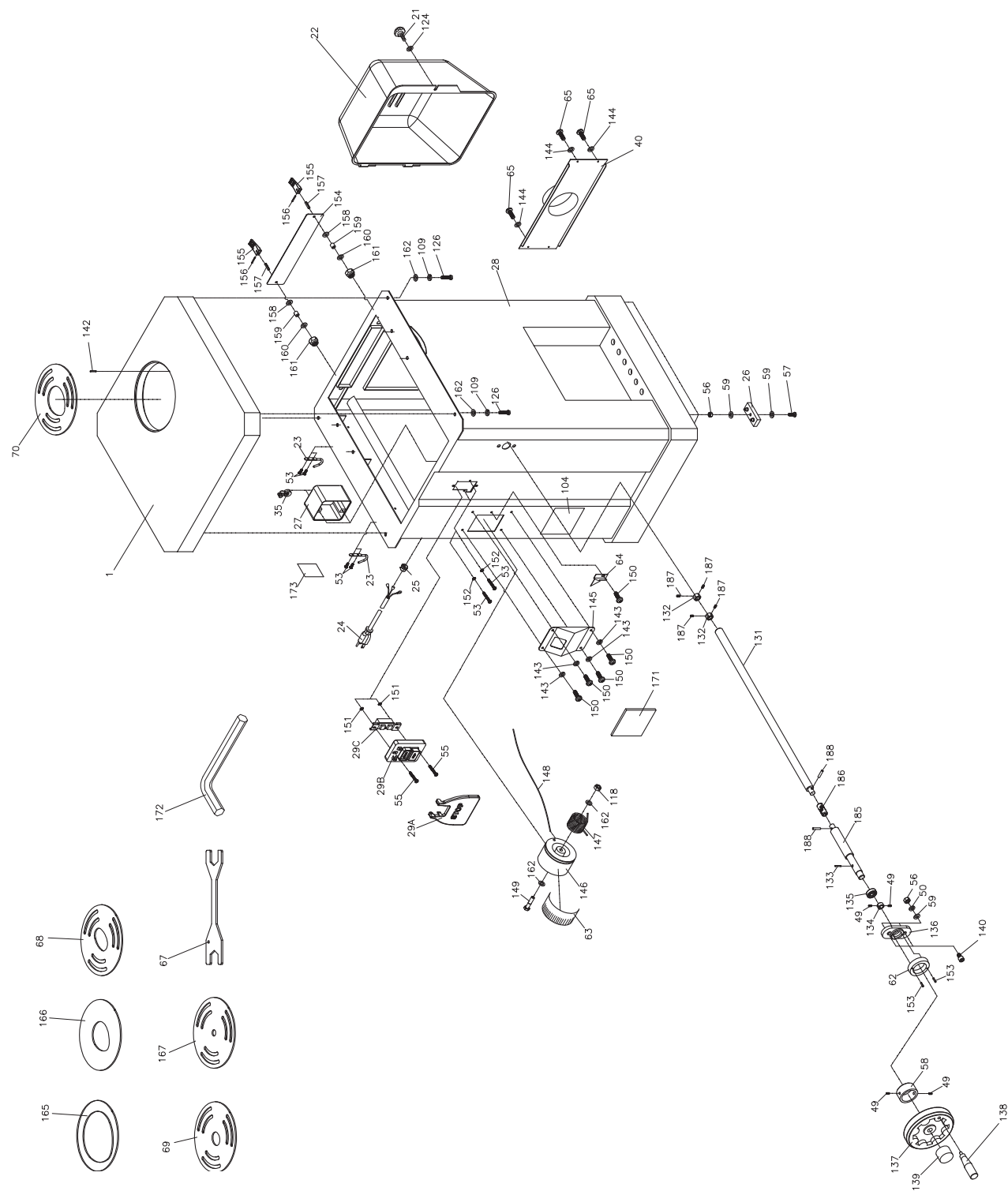


ILLUSTRATION 1



POWER EQUIPMENT CORPORATION

AFM-27
PART # DPEC001027
DATE: 06-26-12
REVISED: 02-24-16

31-484

HEAVY DUTY FLOOR SPINDLE SANDER

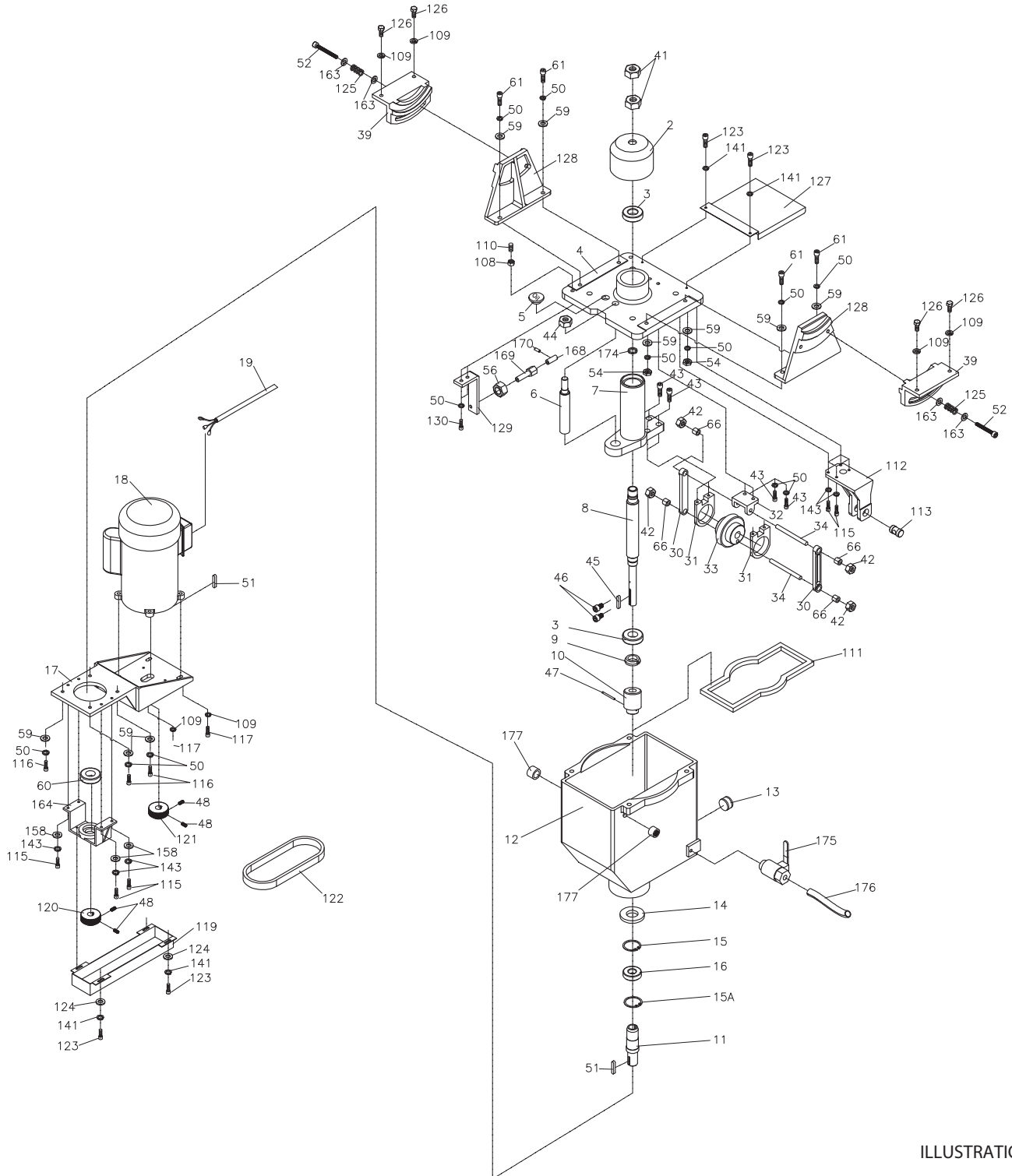


ILLUSTRATION 2

REPLACEMENT PARTS

ITEM NO.	ILLUST NO.	DELTA PART NO.	DESCRIPTION	Q'TY	ITEM NO.	ILLUST NO.	DELTA PART NO.	DESCRIPTION	Q'TY
1	1	DPEC001768	TABLE	1	45	2	DPEC001810	* KEY 5X5X50	1
2	2	DPEC001769	CAP	1	46	2	DPEC001811	* CAP SCREW M3X12L	2
3	2	DPEC001770	BEARING	2	47	2	DPEC001812	PIN	1
4	2	DPEC001771	OIL TANK LID	1	48	1 & 2	DPEC001813	* SET SCREW M6XP1.0X8	4
5	2	DPEC001772	OIL FILLER COVER	1	49	1	DPEC001814	* SET SCREW M6XP1.0X5	4
6	2	DPEC001773	GUIDE SHAFT	1	50	1 & 2	DPEC001815	* SPRING WASHER	18
7	2	DPEC001774	BEARING SUPPORT	1	51	2	DPEC001816	* KEY 5X5X25	2
8	2	DPEC001775	MAIN SHAFT	1	52	1	DPEC001817	* CAP SCREW M8XP1.25X65L	2
9	2	DPEC001776	LOCK NUT	1	53	1	DPEC001818	* ROUND HEAD SCREW	
10	2	DPEC001777	WORM W/GEAR (INCL. DPEC001801)	1	54	2	DPEC001819	* NUT 5/16"-18UNC	4
11	2	DPEC001778	CONNECTOR	1	55	1	DPEC001820	* ROUND HEAD SCREW 3/16"- 24UNCX1 1/2"	2
12	2	DPEC001779	OIL TANK	1	56	1 & 2	DPEC001821	* NUT M8XP1.25	7
13	2	DPEC001780	OIL INDICATOR	1	57	1	DPEC001822	* ROUND HEAD SCREW	
14	2	DPEC001781	OIL SEAL	1	58	1	DPEC002502	SLEEVE	1
15	2	DPEC001782	C RING	1	59	1 & 2	DPEC001823	* FLAT WASHER 5/16"X18X2T 22	
15.1	2	DPEC001783	C RING	1	60	2	DPEC001824	BEARING 6005LLU	1
16	2	DPEC001784	BEARING	1	61	2	DPEC001825	* CAP SCREW 5/16" -18UNCX1 3/4"	4
17	2	DPEC001785	MOTOR PLATE	1	62	1	DPEC001826	HANDWHEEL FORCE RING	1
18	2	DPEC001786	MOTOR	1	63	1	DPEC001827	ANGLE SCALE	1
19	2	DPEC001787	MOTOR CORD	1	64	1	DPEC001828	DIAL POINTER	1
21	1	DPEC001789	KNOB	1	65	1	DPEC001829	* ROUND HEAD SCREW	
22	1	DPEC001790	MOTOR COVER	1	66	2	DPEC001830	TRANSMISSION BAR BUSHING4	
23	1	DPEC001791	HOOK	2	67	1	DPEC001831	OPEN END WRENCH	2
24	1	DPEC001792	POWER CORD	1	68	1	DPEC001832	TABLE INSERT (MEDIUM)	1
25	1	DPEC001793	WIRE CLAMP	1	69	1	DPEC001833	TABLE INSERT (SMALL)	1
26	1	DPEC001794	RUBBER FEET	4	70	1	DPEC001834	TABLE INSERT 2"	1
27	1	DPEC001795	SWITCH BOX	1	104	2	DPEC000667	WARNING LABEL	1
28	1	DPEC001796	CABINET	1	108	2	DPEC001855	* NUT 3/8"	1
30	2	DPEC001798	TRANSMISSION BAR	2	109	1 & 2	DPEC001856	* SPRING WASHER 3/8"	12
31	2	DPEC001799	GEAR BUSHING	2	110	2	DPEC001857	* SOCKET SCREW 3/8"X3/4"L	1
32	2	DPEC001800	TRANSMISSION BAR BASE	1	111	2	DPEC001858	SEAL (LARGE)	1
33	2	DPEC001801	GEAR (USED WITH ITEM 10)REF		112	2	DPEC001859	SCREW HOLDER	1
34	2	DPEC001802	TRANSMISSION SHAFT	2	113	2	DPEC001860	ROD CAP	1
35	1	DPEC001803	WIRE CLAMP	2	115	2	DPEC001862	* CAP SCREW M6XP1.0X16L	8
39	2	DPEC001804	TRUNNION BRACKET	2	116	2	DPEC001863	* CAP SCREW 5/16" -18UNCX1 1/2"	4
40	1	DPEC001805	DUST CHUTE	1					
41	2	DPEC001806	CAP NUT	2					
42	2	DPEC001807	* LOCKING NUT 3/8"-16UNC	4					
43	2	DPEC001808	* CAP SCREW 5/16"-18UNCX1"6						
44	2	DPEC001809	* NYLON NUT 5/8"-11UNC	1					

*= Item is standard hardware and can be purchased in local hardware or home improvement stores.

REPLACEMENT PARTS

ITEM NO.	ILLUST NO.	DELTA PART NO.	DESCRIPTION	Q'TY	ITEM NO.	ILLUST NO.	DELTA PART NO.	DESCRIPTION	Q'TY
117	2	DPEC001864	* CAP SCREW M10XP1.5X30L	4	156	1	DPEC001903	SPRING PIN	2
118	1	DPEC001865	* NUT M10XP1.5	1	157	1	DPEC001904	BAR	2
119	2	DPEC001866	BELT COVER	1	158	1 & 2	DPEC001905	* FLAT WASHER 1/4"X13X1T	6
120	2	DPEC001867	SPINDLE PULLEY	1	159	1	DPEC001906	RUBBER TIPS	2
121	2	DPEC001868	MOTOR PULLEY	1	160	1	DPEC001907	* FLAT WASHER 1/4"X10X1T	2
122	2	DPEC001869	DRIVE BELT	1	161	1	DPEC001908	* NUT	2
123	2	DPEC001870	* CAP SCREW M5XP0.8X10L	6	162	1	DPEC001909	* FLAT WASHER 3/8"X23	6
124	1 & 2	DPEC001871	* FLAT WASHER	5	163	2	DPEC001910	* FLAT WASHER	4
125	1	DPEC001872	SPRING	2	164	2	DPEC001911	BEARING MOUNT	1
126	2	DPEC001873	* HEX. SCREW M10XP1.5X20L	8	165	1	DPEC001912	TABLE INSERT 4"	1
127	2	DPEC001874	MOTOR DUST PROOF PLATE	1	166	1	DPEC001913	TABLE INSER 3"	1
128	2	DPEC001875	TRUNNION	2	167	1	DPEC001914	TABLE INSERT 3/8"	1
129	2	DPEC001876	BRACKET	1	168	2	DPEC001915	SLEEVE	1
130	2	DPEC001877	* CAP SCREW M8XP1.25X15L	2	169	2	DPEC001916	BOLT	1
131	1	DPEC001878	ANGLE ROD	1	170	2	DPEC001917	* SOCKET SCREW M4-8L	1
132	1	DPEC001879	STOP NUT	2	171	1	DPEC001918	ACRYLIC LENS	1
133	1	DPEC001880	SPRING PIN	1	172	1	DPEC001921	SWITCH ACTUATOR	1
134	1	DPEC001881	COLLAR	1	173	1	DPEC001922	SWITCH PLATE	1
135	1	DPEC001882	BEARING 6201	1	174	1	DPEC001923	SWITCH	1
136	1	DPEC001883	HANDWHEEL BRACKET	1	175	2	DPEC002492	VALVE	1
137	1	DPEC001884	HANDWHEEL	1	176	2	DPEC002493	TRANSPARENT PIPE 3/8"X1.01	1
138	1	DPEC001885	HANDLE	1	177	2	DPEC002494	VENT	2
139	1	DPEC001886	* LOCKING NUT 1/2"-12UNC	1	185	1	DPEC002495	ARBOR	1
140	1	DPEC001887	* CAP SCREW M8XP1.25X35	2	186	1	DPEC002496	UNIVERSAL ADAPTER	1
141	2	DPEC001888	* SPRING WASHER	6	187	1	DPEC002497	* SET SCREW 3/16"-24UNC	4
142	1	DPEC001889	SPRING PIN	1	188	1	DPEC002498	PIN Ø4.5X16.5L	2
143	1 & 2	DPEC001890	* SPRING WASHER 1/4"	12	189	1	DPEC002499	ALLEN WRENCH 2MM	1
144	1	DPEC001891	* FLAT WASHER 4.3X10X1T	4	190	1	DPEC002500	LABEL	1
145	1	DPEC001892	DIAL COVER	1	191	2	DPEC002501	OIL SEAL	1
146	1	DPEC001893	DIAL	1	ITEMS NOT SHOWN ON EXPLODED VIEW				
147	1	DPEC001894	DIAL SPRING	1	71		DPEC001835	1/4" SPINDLE ASS'Y	1
148	1	DPEC001895	CABLE	1	72		DPEC001837	3/8" SPINDLE ASS'Y	1
149	1	DPEC001896	* HEX. SCREW M10X75L	1	73		DPEC001839	1/2" SPINDLE ASS'Y	1
150	1	DPEC001897	* PHILIP HD. SCREW M6XP1.0X15L	5	74		DPEC001841	5/8" SPINDLE ASS'Y	1
151	1	DPEC001898	* TOOTH WASHER 3/16"	2	75		DPEC001843	3/4" SPINDLE ASS'Y	1
152	1	DPEC001899	* TOOTH WASHER	2	76		DPEC001845	1" SPINDLE ASS'Y	1
153	1	DPEC001900	SPRING PIN Ø3X12	2	77		DPEC001847	1-1/2" SPINDLE ASS'Y	1
154	1	DPEC001901	INSPECTION PLATE	1	78		DPEC001849	2" SPINDLE ASS'Y	1
155	1	DPEC001902	HANDLE	2	79		DPEC001851	3" SPINDLE ASS'Y	1
					80		DPEC001853	4" SPINDLE ASS'Y	1

*= Item is standard hardware and can be purchased in local hardware or home improvement stores.