



AFM-26
PART # DPEC000410
DATE: 03-20-12
REVISED: 02-24-16

POWER EQUIPMENT CORPORATION

31-483

HEAVY DUTY OSCILLATING BENCH SPINDLE SANDER

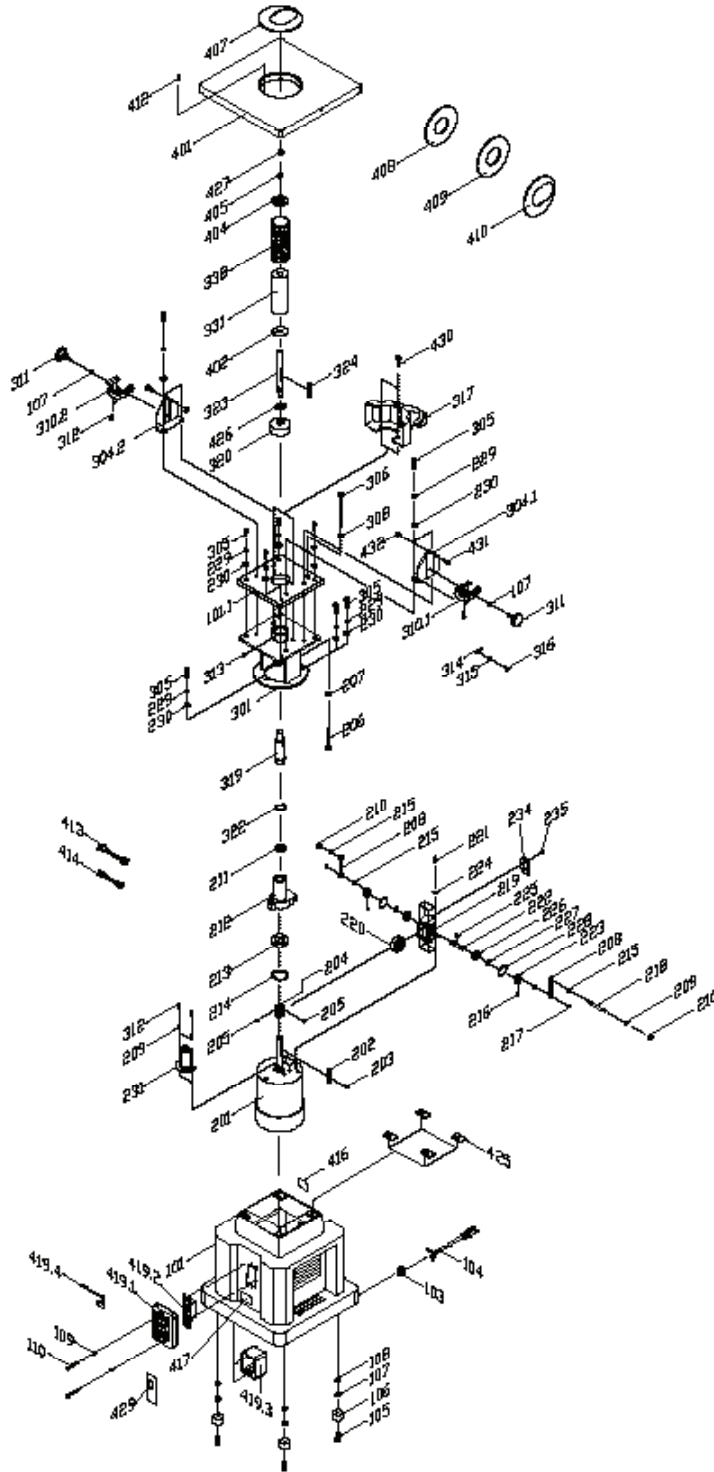


ILLUSTRATION 1

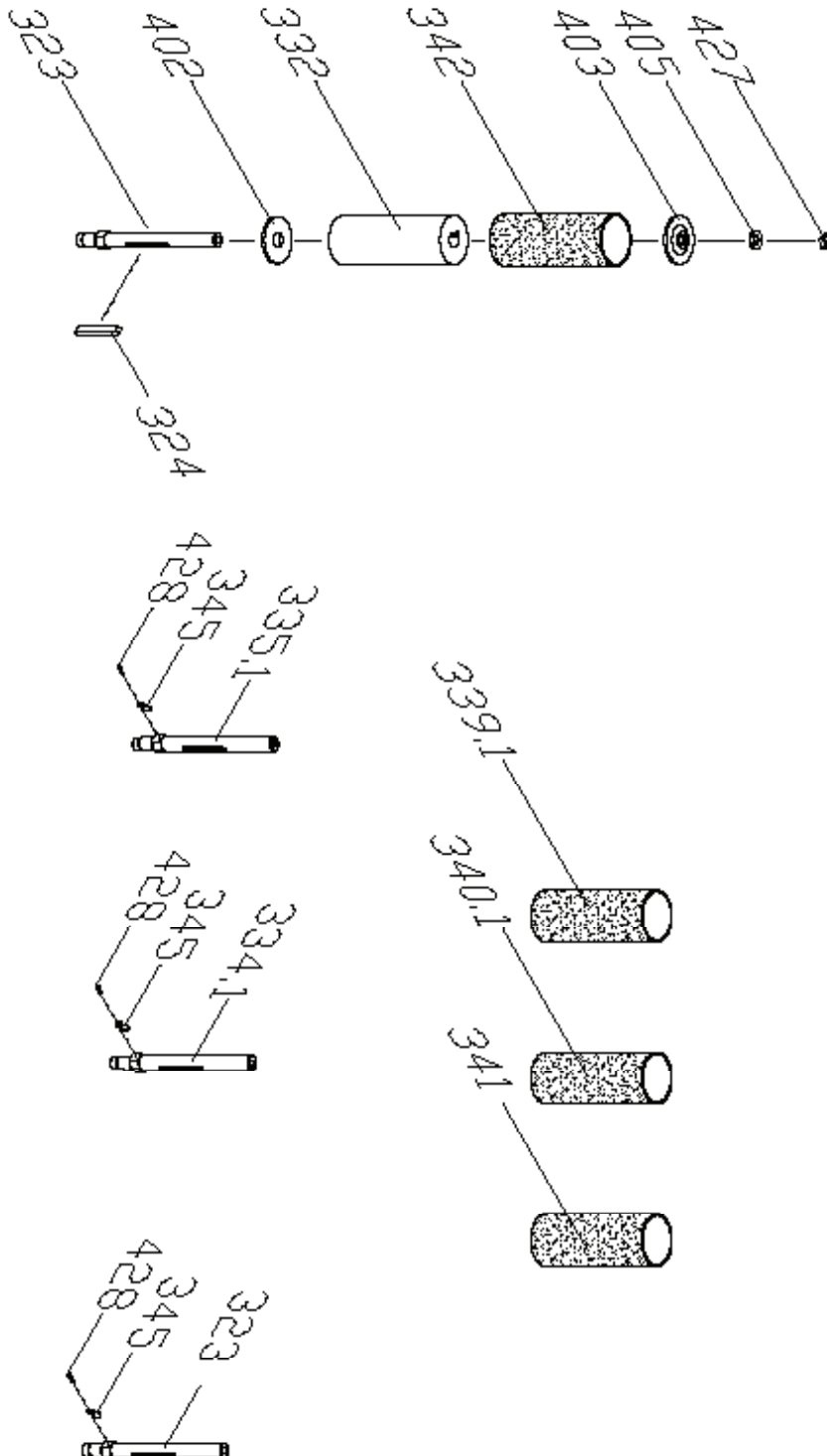


POWER EQUIPMENT CORPORATION

31-483

HEAVY DUTY OSCILLATING BENCH SPINDLE SANDER

AFM-26
PART # DPEC000410
DATE: 03-20-12
REVISED: 02-24-16



RATION 2

REPLACEMENT PARTS

NO.	ILS. #	DELTA PART #	DESCRIPTION	QTY	NO.	ILS. #	DELTA PART #	DESCRIPTION	QTY
101.1	1	DPEC000670	BASE	1	227	1	DPEC000706	C RING STW-12	2
101.2	1	DPEC000671	TOP PLATE	1	228	1	DPEC000707	C RING R-28	2
103	1	DPEC000672	STRAIN RELIEF	1	229	1	DPEC000708	* SPRING WASHER 5/16"	11
104	1	DPEC000673	POWER CORD	1	230	1	DPEC000709	* FLAT WASHER 5/16"x18x2t	11
105	1	DPEC000674	* PHILIPS HEAD SCREW M6x1x25	4	231	1	DPEC000710	OIL CAP	1
106	1	DPEC000675	RUBBER FEET	4	234	1	DPEC000711	REAR OIL COVER	1
107	1	DPEC000676	* FLAT WASHER 1/4"x16	6	235	1	DPEC000712	* ROUND CROSS HEAD SCREW 3/16"-	2
108	1	DPEC000677	* HEX. NUT M6x1.0	4	301	1	DPEC000713	HOUSING	1
109	1	DPEC000678	* SPRING WASHER 3/16"	2	304.1	1	DPEC000714	BRACKET (RIGHT)	1
110	1	DPEC000679	* PHILIPS HEAD SCREW 3/16"- 24UNCx3/4"	2	304.2	1	DPEC000715	BRACKET (LEFT)	1
201	1	DPEC000680	MOTOR	1	305	1	DPEC000716	* HEX. SCREW M8x25	11
202	1	DPEC000681	* KEY 6x6x50	1	306	1	DPEC000717	* HEX. SCSREW M8xP1.25x110L	1
203	1	DPEC000682	* FLAT HEAD SCREW M4x0.7x15	1	308	1	DPEC000718	* HEX. SCREW M8xP1.25	1
204	1	DPEC000683 & DPEC000699	WORM SHAFT & WORM GEAR SET1		310.1	1	DPEC000719	SUPPORT TRUNNION (RIGHT)	1
205	1	DPEC000684	* SET SCREW M6x1x10	2	310.2	1	DPEC000720	SUPPORT TRUNNION (LEFT)	1
206	1	DPEC000685	TRANSMISSION ROD	1	311	1	DPEC000721	LOCK KNOB M6x1x9	2
207	1	DPEC000686	* HEX. NUT M8x1.25	1	312	1	DPEC000722	* HEX. SOCKET CAP SCREW M5x0.8-16	4
208	1	DPEC000687	CONNECTING ROD	2	313	1	DPEC000723	* SET SCREW M6x1x6	1
209	1	DPEC000688	* FLAT WASHER 3/16"x12x1t	4	314	1	DPEC000724	POINTER	1
210	1	DPEC000689	* LOCKING NUT M5	2	315	1	DPEC000725	GEAR WASHER 1/4"	1
211	1	DPEC000690	BEARING 6804ZZ	1	316	1	DPEC000726	* PHILIPS HEAD SCREW M5x0.8x10	1
212	1	DPEC000691	TRANSMISSION	1	317	1	DPEC000727	DUST HOOD	1
213	1	DPEC000692	BEARING 6006ZZ	1	319	1	DPEC000728	MAIN SPINDLE	1
214	1	DPEC000693	C RING R-55	1	320	1	DPEC000729	DUST COVER	1
215	1	DPEC000694	BUSHING	4	322	1	DPEC000730	C RING STW-28	1
216	1	DPEC000695	* SET SCREW	2	323	1,2	DPEC000731	5/8" SANDING SPINDLE	3
217	1	DPEC000696	E RING	2	324	1,2	DPEC000732	* KEY 6x6x50	1
218	1	DPEC000697	CONNECTING SHAFT	1	331	1	DPEC000733	2" RUBBER BUSHING	1
219	1	DPEC000698	BRACKET	1	332	2	DPEC000734	1-1/2" RUBBER BUSHING	1
220	1	DPEC000699	WORM SHAFT	Ref	334.1	2	DPEC000735	1/2" SANDING SPINDLE	1
221	1	DPEC000700	* HEX. SOCKET CAP SCREW M6x1-15	4	335.1	2	DPEC000736	1/4" SANDING SPINDLE	1
222	1	DPEC000701	SHAFT	1	338	1	DPEC000738	2" SANDING SLEEVE	1
223	1	DPEC000702	CRANK SHAFT	2	339.1	2	DPEC000739	1/4" SANDING SLEEVE	1
224	1	DPEC000703	* SPRING WASHER 1/4"	4	340.1	2	DPEC000740	1/2" SANDING SLEEVE	1
225	1	DPEC000704	* KEY 4x4x15	1	341	2	DPEC000741	5/8" SANDING SLEEVE	1
226	1	DPEC000705	BEARING 6001ZZ	2	345	2	DPEC000744	1/4" CLAMP	3

* = Item is standard hardware and can be purchased in local hardware or home improvement stores.

REPLACEMENT PARTS

NO.	ILS. #	DELTA PART #	DESCRIPTION	QTY	NO.	ILS. #	DELTA PART #	DESCRIPTION	QTY
342	2	DPEC000742	1-1/2" SANDING SLEEVE	1	419.4	1	DPEC000918	SWITCH KEY	1
401	1	DPEC000745	TABLE	1	425	1	DPEC000761	RUBBER PAD	4
402	1,2	DPEC000746	2" LOWER FOLLOWER PLATE	2	426	1	DPEC000762	C RING STW-19	1
403	1,2	DPEC000747	1-1/2" UPPER FOLLOWER PLATE	1	427	1,2 *	DPEC000763HEX. NUT 5/16"-18UNC-LH		2
404	1	DPEC000748	2" UPPER FOLLOWER PLATE	1	428	1,2 *	DPEC001037RD. CROSS SCR. M5x0.8x8		3
405	1,2	DPEC000749	* FLAT WASHER 5/16"x16x1t	1	ITEMS NOT SHOWN ON EXPLODED VIEW				
407	1	DPEC000750	2" TABLE INSERT (OVAL)	1	344		DPEC000743	5/8" CLAMP	1
408	1	DPEC000751	2" TABLE INSERT (ROUND)	1	413	*	DPEC000756	WRENCH 14-17	1
409	1	DPEC000752	3/4" TABLE INSERT (ROUND)	1	414	*	DPEC000755	WRENCH 10-12	1
410	1	DPEC000753	3/4" TABLE INSERT (OVAL)	1	455		DPEC000911	1/4" SPINDLE ASS'Y	1
412	1	DPEC000754	SPRING PIN 3x12	1	456		DPEC000912	1/2" SPINDLE ASS'Y	1
416	1	DPEC000757	WARNING LABEL	1	457		DPEC000913	5/8" SPINDLE ASS'Y	1
417	1	DPEC000917	ID LABEL	1	458		DPEC000914	1-1/2" SPINDLE ASS'Y	1
419.1	1	DPEC000759	SWITCH COVER	1	459		DPEC000915	2" SPINDLE ASS'Y	1
419.2	1	DPEC000758	SWITCH	1	460		DPEC001089	3" SPINDLE ASS'Y	1
419.3	1	DPEC000760	SWITCH BOX	1					

* = Item is standard hardware and can be purchased in local hardware or home improvement stores.