

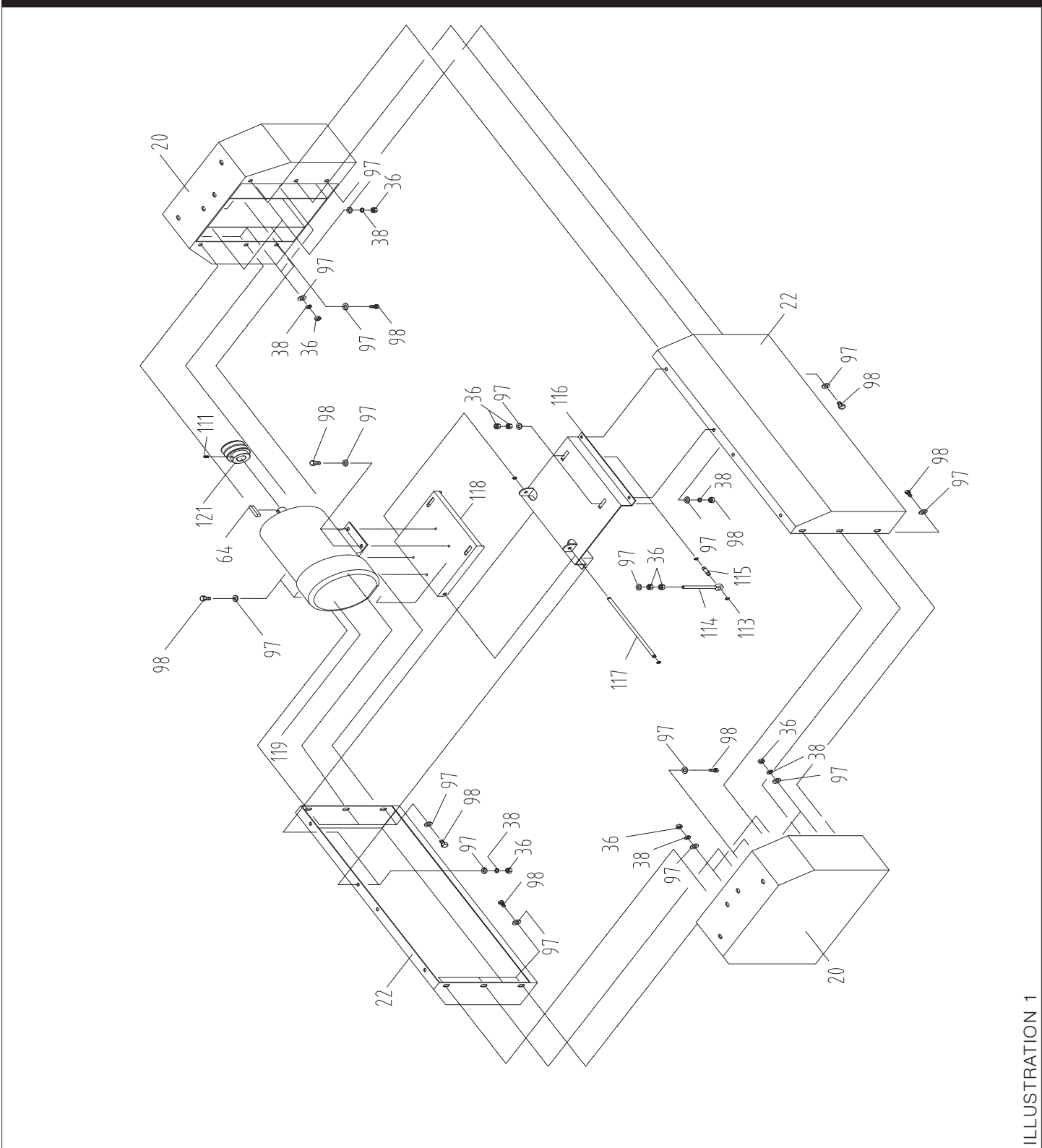


POWER EQUIPMENT CORPORATION

AFM-24
PART # DPEC001024
DATE: 11-09-11
REVISED: 02-24-16

31-481

DUAL DRUM SANDER



31-481

DUAL DRUM SANDER

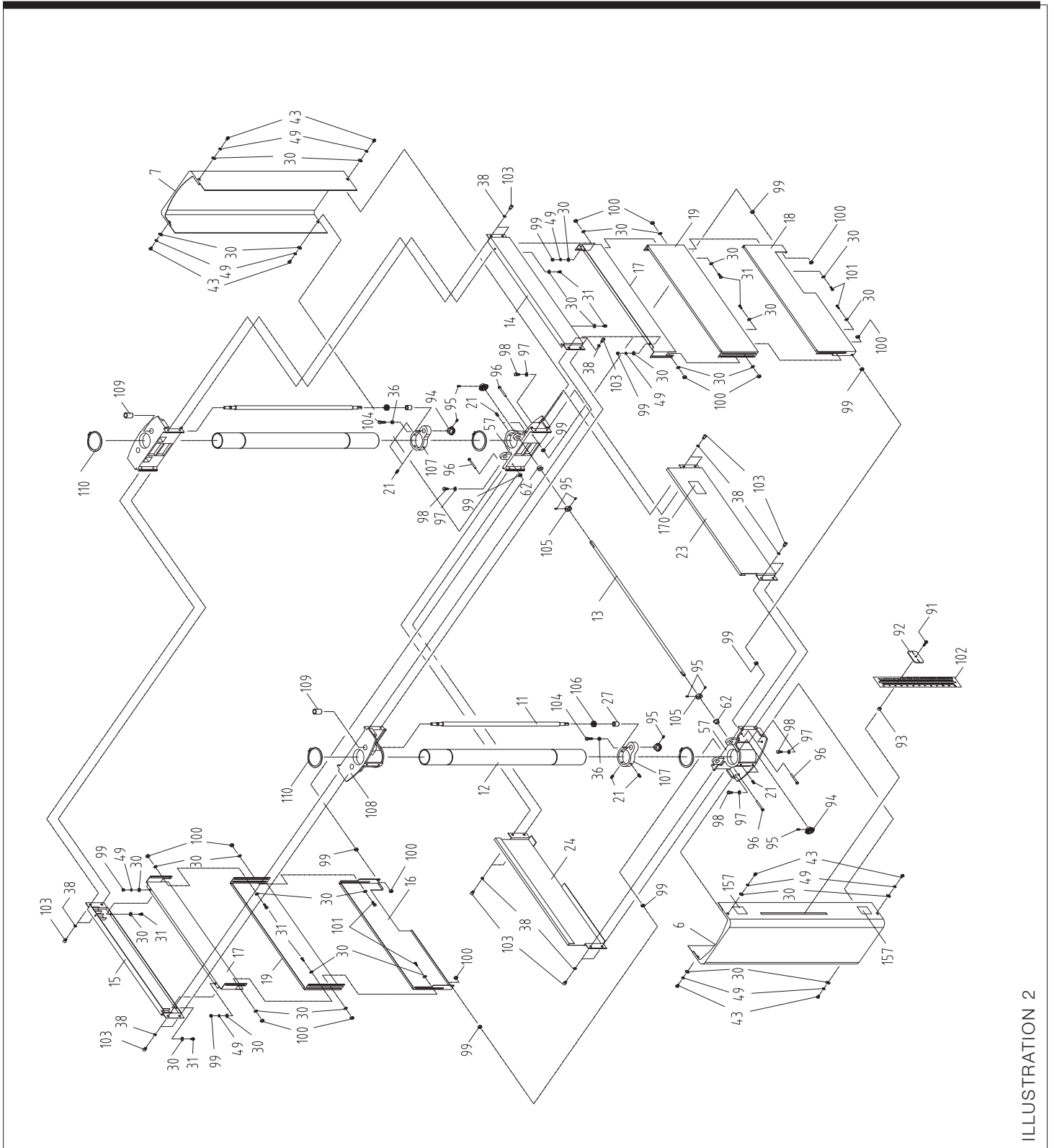


ILLUSTRATION 2

31-481

DUAL DRUM SANDER

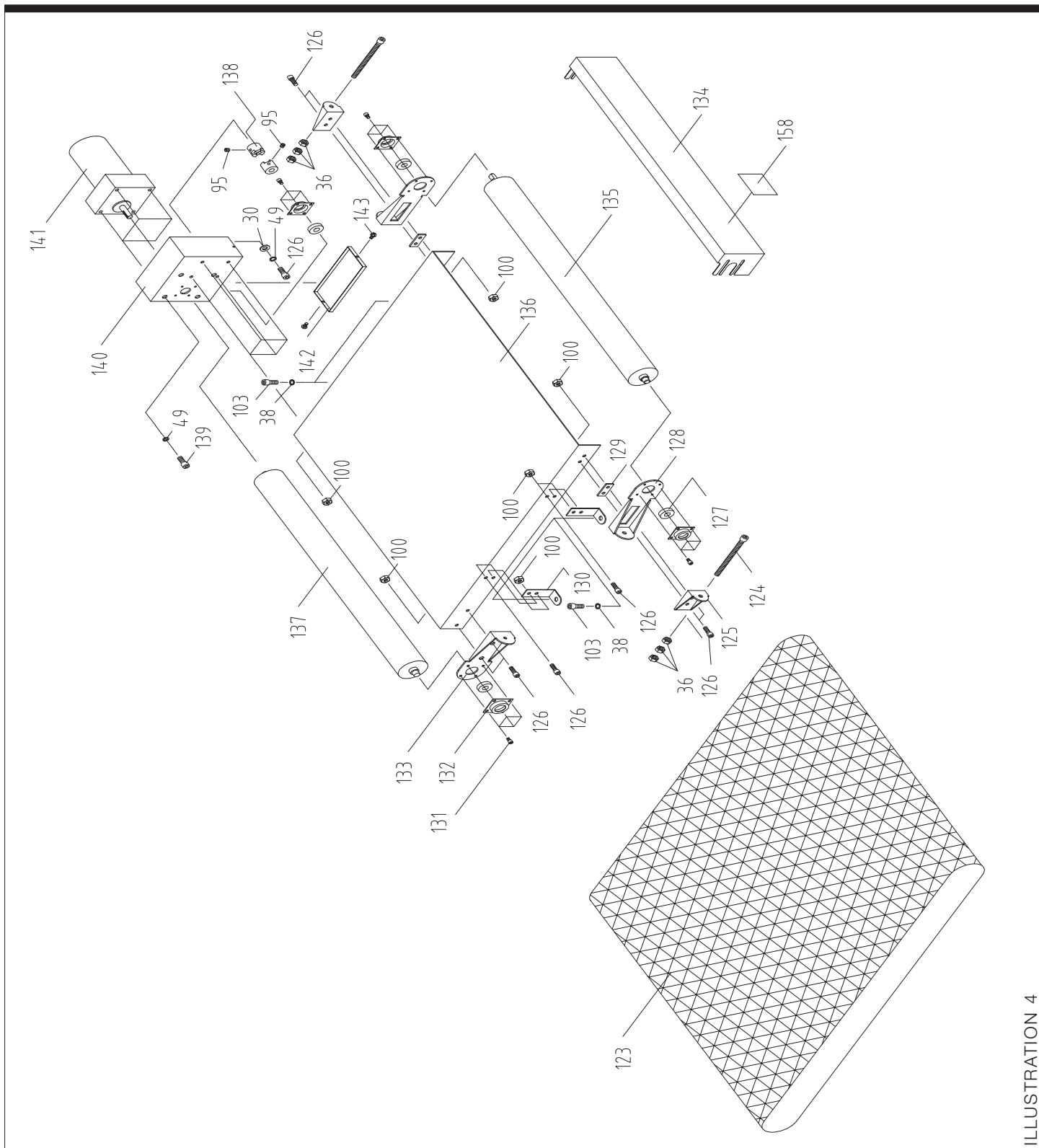


ILLUSTRATION 4

REPLACEMENT PARTS

NO.	ILST. NO.	DELTA PART #	DESCRIPTION	QTY	NO.	ILST. NO.	DELTA PART #	DESCRIPTION	QTY
					43	2,3	DPEC000542	* ROUND HD. SCREW M6xP1.0x10L 24	
1	3	DPEC000500	DUST HOOD FIX PLATE	1	44	3	DPEC000543	MICRO-ADJUSTING SCREW	2
2	3	DPEC000501	STOPPER	1	45	3	DPEC000544	* NYLON NUT M8xP1.25	2
3	3	DPEC000502	PULLEY GUARD	1	46	3	DPEC000545	RIGHT PRESSURE PLATE	3
4	3	DPEC000503	POST GUARD	1	47	3	DPEC000546	LEFT PRESSURE PLATE	3
5	3	DPEC000504	DUST GUARD	1	48	3	DPEC000547	SPRING	6
6	2	DPEC000505	COVER (LEFT)	1	49	2,3,4	DPEC000548	* SPRING WASHER 6mm	36
7	2	DPEC000506	COVER (RIGHT)	1	50	3	DPEC000549	PRESSURE SHAFT BRONZE COVER	6
8	3	DPEC000507	PRESSURE SHAFT	1	51	3	DPEC000550	PRESSURE PLATE BRACKET	2
9	3	DPEC000508	SHAFT	2	52	3	DPEC000551	* ROUND HD. SCREW M5x0.8x80L	6
10	3	DPEC000509	DRUM	2	53	3	DPEC000552	FIXED CLAMP	2
11	2	DPEC000510	SCREW	2	54	3	DPEC000553	FIXED CLAMP SPRING	2
12	2	DPEC000511	POST	2	55	3	DPEC000554	FIXED CLAMP BRACKET	2
13	2	DPEC000512	TRANSMISSION ROLLER	1	56	3	DPEC000555	* NUT 3/16"-24UNC	7
14	2	DPEC000513	TABLE SUPPORT (FRONT)	1	57	2	DPEC000556	BOTTOM COLUMN BRACKET	2
15	2	DPEC000514	TABLE SUPPORT (REAR)	1	58	3	DPEC000557	* FLAT CROSS HEAD SCREW M4xP0.7x10L	2
16	2	DPEC000515	BOTTOM SHIELD PLATE (REAR)	1	59	3	DPEC000558	HOOD LATCHES	2
17	2	DPEC000516	SHIELD PLATE	2	60	3	DPEC000559	RING	2
18	2	DPEC000517	BOTTOM SHIELD PLATE (FRONT)	1	61	3	DPEC000560	PULL CLAMP BIG SPRING	2
19	2	DPEC000518	MOVABLE SHIELD PLATE	2	62	2	DPEC000561	SLEEVE	2
20	1	DPEC000519	STAND	2	63	3	DPEC000562	PULL CLAMP SMALL SPRING	2
21	2,3	DPEC000520	* SOCKET SCREW M8xP1.25x8L	12	64	1,3	DPEC000563	KEY 6x6x40	3
22	1	DPEC000521	PARTITION PLATE	2	65	3	DPEC000564	PULL CLAMP	2
23	2	DPEC000522	FRONT COVER	1	66	3	DPEC000565	PULL CLAMP BRACKET	2
24	2	DPEC000523	REAR COVER	1	67	3	DPEC000566	HEX. SOCKET HD. SCREW M8xP1.25x20L	2
25	3	DPEC000524	HANDLE KNOB	1	68	3	DPEC000567	DUST GUARD HANDLE	1
26	3	DPEC000525	HANDLE	1	70	3	DPEC000568	SPACER	2
27	2,3	DPEC000526	BRONZE COLLAR COVER	2	71	3	DPEC000569	COVER HINGE	2
28	3	DPEC000527	POST COVER	2	72	3	DPEC000570	RIGHT BEARING HOUSING	1
29	3	DPEC000528	UPPER BRACKET	2	73	3	DPEC000571	RIGHT MICRO-ADJUSTING BEARING CAP	1
30	2,3,4	DPEC000529	* FLAT WASHER 6.2x19x2t	48	74	3	DPEC000572	DRIVEN ROLLER	2
31	2,3	DPEC000530	* HEX. HEAD SCREW M6xP1.0x22L	14	75	3	DPEC000573	* FLAT WASHER 10x21x2t	2
32	3	DPEC000531	BUFFER	4	76	3	DPEC000574	LEFT THREADED PULLEY SCREW 5/16"-18UNCx3/4"	2
33	3	DPEC000532	* CARRIAGE BOLT M8xP1.25x25L	8	77	3	DPEC000575	* SCREW M5xP0.8x20L	4
34	3	DPEC000533	BEARING CAP	6	78	3	DPEC000576	MAGNETIC SWITCH	1
35	3	DPEC000534	BEARING 6205	4	79	3	DPEC000577	* FLAT CROSS HD. SCREW M5x0.8x15L	2
36	1,2,3,4	DPEC000535	NUT M8xP1.25	32	80	3	DPEC000578	REGULATOR KNOB	1
37	3	DPEC000536	LEFT MICRO-ADJUSTING BEARING CAP	1	81	3	DPEC000579	SAFETY SWITCH	1
38	1,2,3,4	DPEC000537	* SPRING WASHER 8mm	46	82	3	DPEC000580	ELECTRICAL INSULATION BOARD	1
39	3	DPEC000538	* NYLON NUT M8x0.8	6	83	3	DPEC000581	CORD COLLAR	1
40	3	DPEC000539	LEFT BEARING HOUSING	1	84	3	DPEC000582	* CROSS HD. SCREW M6xP1.0x16L 4	
41	3	DPEC000540	* FLAT CROSS HD. SCREW M8xP1.25x25L	8					
42	3	DPEC000541	ANGLE PLATE	4					

*= Item is standard hardware and can be purchased in local hardware or home improvement stores.

REPLACEMENT PARTS

NO.	ILST. NO.	DELTA PART #	DESCRIPTION	QTY	NO.	ILST. NO.	DELTA PART #	DESCRIPTION	QTY
85	3	DPEC000583	STRAIN RELIEF	1	129	4	DPEC000624	SPACER PAD	2
86	3	DPEC000584	SWITCH MOUNTING PLATE	1	130	4	DPEC000625	TABLE BRACKET	4
87	3	DPEC000585	STRAIN RELIEF 6R-3	1	131	4	DPEC000626 *	ROUND CROSS HD. SCREW 7M5xP0.8x8L	16
88	3	DPEC000586	PC BOARD FIX PLATE	1	132	4	DPEC000627	BEARING CAP	4
89	3	DPEC000587	PC BOARD	1	133	4	DPEC000628	POSITIONING PLATE	1
90	3	DPEC000588	SWITCH REAR GUARD	1	134	4	DPEC000629	TABLE GUARD	1
91	2	DPEC000589 *	FLAT CROSS HD. SCREW M5xP0.8x20L	1	135	4	DPEC000630	FEED BELT IDLER ROLLER	1
92	2	DPEC000590	INDICATOR	1	136	4	DPEC000631	FEED BELT PLATEN	1
93	2	DPEC000591	RING	1	137	4	DPEC000632	FEED BELT DRIVE ROLLER	1
94	2	DPEC000592	BEVEL GEAR	4	138	4	DPEC000633	DRIVE COUPLING	2
95	2,4	DPEC000593 *	SCREW M6xP1.0x6L	10	139	4	DPEC000634 *	HEX. SOCKET HD. SCREW M6x1.0x16	4
96	2	DPEC000594 *	HEX. HD. SCREW 1/4"x1-3/4"	4	140	4	DPEC000635	ELECTRIC CONTROL BOX	1
97	1,2	DPEC000595 *	FLAT WASHER 8.2x22x3	40	141	4	DPEC000636	SPEED REDUCTION MOTOR	1
98	1,2	DPEC000596 *	HEX. HD. SCREW M8xP1.25x25L	28	142	4	DPEC000637	BOTTOM COVER, ELECTRIC CONTROL BOX	1
99	2	DPEC000597 *	NUT M6xP1.0	12	143	4	DPEC000638 *	SCREW M5xP0.8x10L	2
100	2,4	DPEC000598 *	NYLON NUT M6xP1.0	30	144	3	DPEC000639	SANDING BELT P80	1
101	2	DPEC000599 *	HEX. HD. SCREW M6xP1.0x25L	4	145	3	DPEC000640	SANDING BELT P120	1
102	2	DPEC000600	GRADUATED SCALE	1	146	3	DPEC000641	BELT	2
103	2,4	DPEC000601 *	HEX. SOCKET HD. SCREW M8xP1.25x15L	20	147	3	DPEC000642 *	WRENCH 12/14mm	1
104	2	DPEC000602 *	HEX. SOCKET HD. SCREW M8xP1.25x25L	2	148	3	DPEC000643 *	WRENCH 6mm	1
105	2	DPEC000603	POSITIONING COLLAR	2	149	3	DPEC000644 *	WRENCH 5mm	1
106	2	DPEC000604	BEARING 51102	2	150	3	DPEC000645	MOTOR CORD	1
107	2	DPEC000605	SCREW HOLDER	2	151	3	DPEC000646	CORD	1
108	2	DPEC000606	SLIDE	2	152	3	DPEC000647	SWITCH CORD	2
109	2	DPEC000607	SCREW BUSHING	2	153	3	DPEC000648	TWO ENDS TERMINAL CORD	2
110	2	DPEC000608	RING S80	4	154	3	DPEC000649	MANUAL	1
111	1,3	DPEC000609 *	SOCKET SCREW M5xP0.8x10L	7	155	3	DPEC000650	WARNING LABEL	1
113	1	DPEC000610	RING STW-8	6	156	3	DPEC000651	FORBIDDEN LABEL	1
114	1	DPEC000611	MOTOR ADJUSTMENT SCREW	2	157	2	DPEC000652	INDICATION LABEL	1
115	1	DPEC000612	MOUNTING SHAFT- MOTOR ADJUST	2	158	4	DPEC000653	WARNING LABEL	1
116	1	DPEC000613	MOTOR BASE	1	159	3	DPEC000654	DUST COVER WARNING LABEL	1
117	1	DPEC000614	MOTOR BASE SHAFT	1	160	3	DPEC000655	WARNING LABEL	1
118	1	DPEC000615	MOTOR ADJUSTMENT PLATE	1	161	3	DPEC000656	WARNING LABEL	1
119	1	DPEC000616	MOTOR	1	162	3	DPEC000657 *	T WRENCH 2mm	1
121	1	DPEC000617	DRIVE PULLEY	1	163	3	DPEC000658	SPEED LABEL	1
123	4	DPEC000618	FEED BELT 635x1575mm	1	165	3	DPEC000659	INDICATOR	2
124	4	DPEC000619 *	HEX. SOCKET HD. SCREW M8xP1.25x100L	2	166	3	DPEC000660	ADJUSTING RING	2
125	4	DPEC000620	MICRO ADJUSTMENT BLOCK	2	167	3	DPEC000661	DIAL	2
126	4	DPEC000621 *	HEX. SOCKET HD. SCREW M6xP1.0x20L	14	168	3	DPEC000662 *	ROUND CROSS HD. SCREW M5xP0.8x8L	2
127	4	DPEC000622	BEARING 6202	4	169	3	DPEC000663 *	SOCKET SCREW M6xP1.0x10L	4
128	4	DPEC000623	MICRO ADJUSTMENT FIX BLOCK	2	170	2	DPEC000664	MACHINE LABEL	1

*= Item is standard hardware and can be purchased in local hardware or home improvement stores.

REPLACEMENT PARTS

NO.	ILST. NO.	DELTA PART #	DESCRIPTION	QTY
176	4	DPEC002646	COVER BRACKET	1
177	4	DPEC002647	* STRAIN RELIEF	2
178	3	DPEC002648	* HEX NUT	2
179	3	DPEC002649	* SCREW	2
180	3	DPEC002650	LOCKWASHER	2

*= Item is standard hardware and can be purchased in local hardware or home improvement stores.